

# 7天 桂林/龙胜/阳朔

BeeFlyz 

TOUR CODE: CN7KWL-AK

## 行程特色

当地4+5星酒店  
直飞桂林4小时  
桂林最美龙脊梯田  
最新景点叠溪瀑布



### 风味特色

桂林芋头宴、玉玺少数民族自助餐

阳朔啤酒鱼宴、桂林米粉宴

七星渔村风味

### 航班时间

AK 156 KUL to Guilin 0705-1115

AK 157 Guilin to KUL 1220-1615

蜜蜂旅游  
BeeFlyz  
Holiday Sdn. Bhd.

#### OFFICE ADDRESS:

No.37, Block G, Jalan 3/101C,  
Cheras Business Centre,  
56100 Kuala Lumpur, Malaysia.

Email: sales@beeflyzholiday.com.my

Tel: +603-9133 9690

Departure Date

Adult (twin)

Fare Included: ✓ Taxes ✓ Tipping

### 1 吉隆坡 → 桂林 (午晚餐)

◆ **穿山公园** 因公园里的山中间贯穿了一个洞而得名。真切反应了桂林奇山秀水的特性!



◆ **穿山岩** 洞内有数不尽的千姿百态的钟乳石, 以及荣获大世界基尼斯记录的“四连体石盾”更是堪称世界溶洞一绝。

住宿: 桂林曼哈顿酒店或同级(5\*)

### 2 桂林 → 阳朔 (早午晚餐)

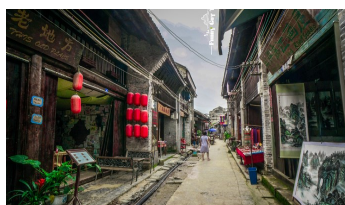
◆ **银子岩** 被誉为“桂林山水的代表”, “桂林最美溶洞”。洞内汇集了不同地质年代发育生长的钟乳石, 晶莹剔透, 洁白无瑕, 宛如夜空的银河倾斜而下。



◆ **船游兴坪漓江** 桂林山水甲天下”指的就是游漓江。漓江的两岸山峰伟岸挺拔, 形态万千, 是桂林风光的精华。(含游船)



◆ **兴坪古镇** 一座拥有一千七百多年历史的古镇。古镇内保存有古街、古桥、古戏台、古庙等景物, 这里也是二十元人民币背面图案的取景地。



◆ **阳朔西街** 除了中国情结, 西域风情也是阳朔西街的特色之一。异国风情的咖啡店, 酒吧和中国古色古香的建筑, 形成了阳朔西街独特的旅游景点资源。

住宿: 新西街国际酒店或同级(5\*)

### 3 阳朔 → 龙胜 (早午晚餐)

◆ **龙脊梯田** 集壮丽与秀美于一体, 有“世界梯田之冠”的美称。梯田如链似带, 把一座座山峰环绕成一只只巨大的螺蛳。



◆ **龙脊古壮寨** 目前有300户人家, 1300多人口, 有廖、侯、潘三姓, 壮族, 是广西北壮的聚居地。村寨内还保存有几十户人家连在一起的壮族连屋, 古风古韵, 极具壮族建筑代表性。

住宿: 龙脊国际大酒店或同级(4\*)

### 4 龙胜 → 桂林 (早午晚餐)

◆ **红溪景区叠溪瀑布** 被称为“桂林最美的瀑布”。叠溪瀑布为红溪瀑布群中最大的瀑布, 高35米宽约60余米。



◆ **南溪山** 桂林十大名山之一, 两峰对峙、高突险峻, 犹如两扇白色屏风。

◆ **榕杉湖风景区** 漫步观赏九曲七星桥、古南门、千年古榕树等景点。涉足其间虽处闹市, 却似进入桃源仙境。

◆ **日月双塔** 日塔是目前世界上最高的铜塔, 铜塔位于美丽的杉湖中心, 是中国第一座全铜宝塔。



◆ **九天银河大瀑布** 观漓江瀑布大酒店世界第一大人造大瀑布。

◆ **竹炭生活馆**

住宿: 桂林曼哈顿酒店或同级(5\*)

### 5 桂林 (早午晚餐)

◆ **丝绸**

◆ **尧山+缆车** 桂林市的高峰。乘搭缆车登山尧山, 站在山顶举目四望, 山前水田如镜, 村舍如在画中, 千峰环野绿。(含缆车)



◆ **船游市内江** 乘船观赏桂林十大名山桂林城徽—象鼻山、伏波山、斗鸡山、等景点。(含游船)



◆ **茶叶**

◆ **万达广场** 桂林市最大的广场, 购物中心也是商业步行街。

住宿: 桂林曼哈顿酒店或同级(5\*)

### 6 桂林 (早午晚餐)

◆ **珠宝**

◆ **象鼻山观景台** 观赏桂林的象征「象鼻山」, 因山形酷似一头大象饮水而得名。



◆ **宝树堂**

◆ **东西巷** 桂林明清时代遗留下的唯一的历史街巷, 古香古色, 有着各式特色店铺, 也有着当地特色风味美食, 非常值得一逛。

◆ **逍遥楼** 始建于唐代初期的逍遥楼, 曾一度与黄鹤楼、岳阳楼、滕王阁齐名。登楼眺望, 山川景色一览无余。

住宿: 桂林曼哈顿酒店或同级(5\*)

### 7 桂林 → 吉隆坡 (早餐)

◆ 早餐后, 送往机场飞返家园。

#### 必须参加自费项目 (人民币 350)

- A) 《梦幻漓江》舞台大秀
- B) 竹筏漂流+三姐对歌+鱼鹰抓鱼
- C) 夜车游两江四湖观桂林夜景
- D) 正阳路步行街

#### 建议自费项目 (人民币 250)

- i) 张艺谋《印象刘三姐》

\*酒店以当地星级为准 行程安排仅供参考, 以最终航班及酒店确认为准\*



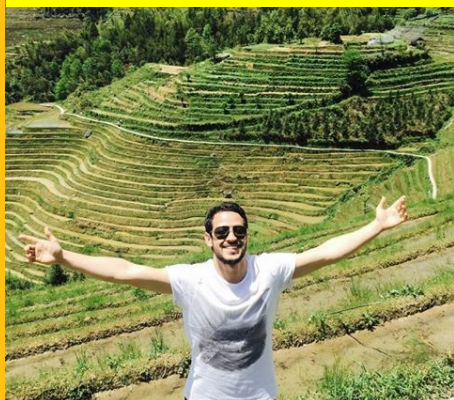
# 7<sup>o</sup> Panoramic Guilin

BeeFlyz 

TOUR CODE: CN7KWL-AK

## Highlights

**Local 4+5★ Hotel**  
**Direct Flight to Guilin**  
**Fascinating of Longji Rice Terrace**  
**Charming of Diexi Waterfall**



### Delicacies

Guilin Yam Cuisine, Local Ethnic Buffet

Yangshuo Beer Fish Cuisine

Guilin Noodles, Farm Flavor

### Flight Schedule

AK 156 KUL to Guilin 0705-1115

AK 157 Guilin to KUL 1220-1615

  
 蜜蜂旅游  
 BeeFlyz  
 Holiday Sdn. Bhd.

#### OFFICE ADDRESS:

No.37, Block G, Jalan 3/101C,  
 Cheras Business Centre,  
 56100 Kuala Lumpur, Malaysia.

Email: sales@beeflyzholiday.com.my

Tel: +603-9133 9690

Departure Date

Adult (twin)

Fare Included: ✓ Taxes ✓ Tipping

### 1 Kuala Lumpur → Guilin (L,D)

- ◆ Assemble at KLIA 2, depart flight to Guilin. Upon arrival, check in hotel.
- ◆ **Tunnel Hill** it gains its name because there is a hole named Moon Rock at the waist of the hill, extending throughout the hill from south to north. From a distance, it seems to be a full moon.



- ◆ **Chuanshan Karst Cave** a Guinness World Record has come from this cave, which is 'one stalactite pole conjoining the most cave shields'.

Hotel: 5\* Manhattan Hotel or similar

### 2 Guilin → Yangshuo (B,L,D)

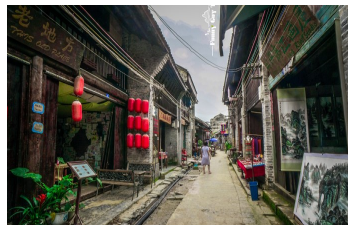
- ◆ **Silver Cave** is the largest karst cave in Guilin and numerous crystal stalactites extend from the roof of the cave like stars in a falling Milky Way.



- ◆ **Li River** the most beautiful scenes of Guilin scenery are found along the Li River. The hills beyond hills with their reflections in the crystal water are like fairy land, the green bamboo greets you all the way along the river in the breeze. (included cruise ride)



- ◆ **XingPing Ancient Town** is celebrated for its natural scenery and ancient cultural heritage in China, and it boasts of being the most beautiful ancient town along the Li River.



- ◆ **West Street** the most prosperous street in Yangshuo with a history of more than 1,400 years.

Hotel: 5\* New West Street Hotel or similar

### 3 Yangshuo → Longshen (B,L,D)

- ◆ **Longji Rice Terraces** is the most amazing terrace in China! The terraced fields are built along the slope winding from the riverside up to the mountain top.



- ◆ **Longji Guzhuang Village** walking through these old buildings with a wonderful feeling of peace and many tourists spend over half a day simply wandering through the village and getting lost in its antiquated beauty.

Hotel: 4\* Longji Int'l Hotel or similar

### 4 Longshen → Guilin (B,L,D)

- ◆ **Diexi Waterfall** with the reputation of the unique colorful stream, got its name because the stones of the stream are brilliant red dark brown rocks in water and sunshine.



- ◆ **Nanxi Hill Park** Two rock peaks in the hill look like a pen rack, with the distance between two peaks of only 0.3 meter wide. The rock walls in the south and north are as white as jade as if they were surrounded by clouds after rain

- ◆ **Rongshanhu Lake Scenic Spot** it features the traditional Chinese landscape with terraces, towers, pavilions, ancient city gate, historical ruins, ten-thousand-year old banyan tree, zigzag bridge and etc.

- ◆ **Sun & Moon Pagoda** known as Gold and Silver Pagodas because of their colors at night. The Sun Pagoda is the world's highest bronze pagoda and the world's highest pagoda above water.



- ◆ **Lijiang Waterfall Hotel** viewing the largest artificial waterfall show in the world.

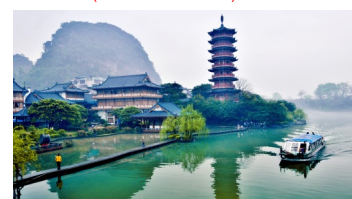
◆ Bamboo charcoal product  
 Hotel: 5\* Manhattan Hotel or similar

### 5 Guilin (B,L,D)

- ◆ Silk Factory
- ◆ **Yao Mountain** is the highest peak of Guilin's city peaks. There's an excellent view from the top, which you can get ascend by cable car. (included cable ride)



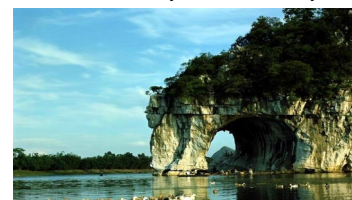
- ◆ **Li River (City Area)** where you will see structures such as Elephant Trunk Hill, Fu Bo Hill, Folded Brocade Hill and so on. (included boat ride)



- ◆ Tea
- ◆ **Wanda Plaza Shopping Mall**  
 Hotel: 5\* Manhattan Hotel or similar

### 6 Guilin (B,L,D)

- ◆ Jewellery
- ◆ **Elephant Trunk Hill** ascend to observatory deck and well enjoy the beauty of the trunk hill. The mountain is named whose shape is just like a huge elephant drinking water from the river, it has become the symbol of Guilin City.



- ◆ Chinese Herbal
- ◆ **East West Alley** here you could not only enjoy the traditional Guilin life style, housing, culture, but also enjoy local foods and make yourself relaxation.
- ◆ **Xiao Yao Tower** an ancient tower which enjoyed high reputation in South China.

### 7 Guilin → Kuala Lumpur (B)

- ◆ After breakfast, transfer to airport for your flight depart home.

### Compulsory Tour (CNY 350)

- A) [Dream of Li River] Show
- B) Bamboo Rafting + Sanjie Singing + Osprey Catch Fish Performance
- C) Guilin Night View Bus Tour
- D) Zhengyang Road Shopping Street

### Optional Tour (CNY 250)

- i) [Impression of Liu San Jie]  
 Show Directed by Zhang Yi Mou

Hotels based on local star rating category. The sequence of itinerary, such as sightseeing, meals and hotels arrangement may be varies on the actual tour.