

8天 冬季韩国-滑雪

BeeFlyz

TOUR CODE: KR8SKI-D7

行程特色

全程5酒店
一次性游览三大城市
首尔·釜山·济州岛



风味特色

Today 海鲜自助餐

济州岛鲍鱼海鲜火锅

人参鸡汤、黑猪烧烤

八色烤肉、石头拌饭+涮涮锅

春川铁板鸡排+炒年糕、马铃薯猪骨汤

航班时间

D7 518 KUL to Busan 0155-0850

Busan to Jeju TBA

Jeju to Seoul TBA

D7 505 Incheon to KUL 1625-2210

蜜蜂旅游
BeeFlyz
Holiday Sdn. Bhd.

OFFICE ADDRESS:

No.37, Block G, Jalan 3/101C,
Cheras Business Centre,
56100 Kuala Lumpur, Malaysia.

Email: sales@beeflyzholiday.com.my

Tel: +603-9133-9690

Departure Date

Adult (twin)

1 吉隆坡→釜山 (飞机餐)

◆ 集合于吉隆坡机场，乘搭航班飞往韩国第二大城市『釜山』。

2 釜山→济州岛 (午晚餐)

◆ 广安大桥 韩国最大的横跨大海的海上桥梁，车游周边风光。

◆ 甘川洞文化村 一来到釜山，绝对不能错过的就是这个色彩缤纷的彩绘壁画村了！也是各个韩剧和知名韩综Running Man的拍摄场景。绝对是想更了解釜山的你不能错过的旅游景点喔！



◆ Biff 电影街广场 釜山国际电影节前一夜的特别活动每年都会在「BIFF开放广场」展开。

◆ Jalgachi Market 大型海鲜市场，在这里还能现场享用最新鲜的现捕海鲜。

◆ 内陆航班飞济州岛 (1.0hr)

住宿: Utop Ubless Hotel 或同级(5*)

3 济州岛 (早午餐)

◆ 城山日出峰 被称为济州岛第一景。其顶部有巨大的火山口，火山口直径600米。



◆ 城邑民俗村 这里拥有大量古时民宅等建筑，在此可观看到济州居民实际生活居住。

◆ 济州岛游览船 乘船游览观赏鸟岛，正房瀑布，森岛，蚊岛，虎岛，海底，孤石浦及12个洞穴和西归浦海岸绝美的景观。在一望无际的海上，看那些漂在蔚蓝海上的小岛，遥望济州岛巍然屹立的汉拿山，会给你带来无限的快乐。(含游船)



◆ Play K Pop 博物馆 在济州岛遇见欧巴！全世界最大的K-POP

博物馆让你与偶像超近距离接触！无论是想在摇滚区疯演唱会、与偶像超近距离接触或想化身韩流明星！



◆ 泰迪熊博物馆 不能错过的超梦幻世界最大泰迪熊博物馆！

住宿: Utop Ubless Hotel 或同级(5*)

4 济州岛→首尔 (早午餐)

5 平昌

◆ 内陆航班飞往首尔 (1.0hr)

◆ Alpensia滑雪渡假村 冬季奥运会比赛场地。度假村内设有专为滑雪板玩家及家庭滑雪游客特别准备的6条滑雪道，不但有初级与中级者专用滑雪道，让不熟练的初级滑雪者也能尽情体验动感的滑雪乐趣，还有专为滑雪板爱好者设置的专用滑雪道，让滑雪板玩家能享受超乎想像的刺激速度。(滑雪用具自理)

住宿: Alpensia Resort 或同级(5*)



6 平昌→南怡岛→首尔 (早午餐)

◆ 衣岩湖Skywalk 设置在距水面12米高空处的圆形平台，它的最大特征是地板与栏杆均是透明的。走在其上，仿如漫步于天空中一般，给人以随时可能会掉落水中的错觉，刺激感十足。



◆ 南怡岛 韩剧《冬季恋歌》拍摄场景，宽阔的草地和楸树林道，或许对影迷来说一定会觉得非常感动有如置身戏中。(含游船)

住宿: Shilla Stay Hotel 或同级(5*)



7 首尔 (早晚餐)

◆ DIY 紫菜+韩服试穿

◆ 爱宝乐园 世界第四大主题公园，由全球集市、美洲探险、动物王国、欧洲探险、魔术天地5个主题区组成。除了多达40多种的游乐设施外，还有依照季节举办的各种游行活动和四季花园！



◆ 动物王国+熊猫馆 近距离和熊猫、黑熊等动物互动，绝对给你新奇难忘的乐园体验！

◆ 东大门市场 被称为时尚诞生地，是韩国最多服装商人聚集的地方，也是潮流之地

住宿: Shilla Stay Hotel 或同级(5*)

8 首尔 (早午餐)

◆ 首尔塔 被称为首尔的象征，是游客喜欢的地方。(不登塔)

◆ 爱情锁墙 铁丝网上密密麻麻的爱情锁，传说只要锁上锁头并拔掉钥匙就可以实现爱情。

◆ 人参公卖局、护肝宝展卖专卖店、韩流时尚彩妆店

◆ 明洞 韩国第一的购物天堂。

◆ 乐天免税店 韩国规模最大、产品最新的韩国代表免税店。

◆ FIREMAN救火英雄 75分钟紧张刺激，不间断的舞台剧表演呈现给您的绝对前所未见！

住宿: Shilla Stay Hotel 或同级(5*)



9 首尔→吉隆坡 (早餐)

◆ 早餐后，送往机场返回吉隆坡。

Fare Included: ✓Taxes ✓Tipping

酒店以当地星级为准。行程安排仅供参考，以最终航班及酒店确认为准

8th Winter Korea

BeeFlyz 

TOUR CODE: KR8SKI-D7

Highlights

Local 5 Hotel
Visit Korea famous
three city
Seoul • Busan • Jeju



Todai
Seafood Buffet

Delicacies

Todai Seafood Buffet
Jeju Island Abalone Hot Pot
Ginseng Chicken Soup, Jeju Black Pork BBQ
Palsaik Korean BBQ, Bibimbap Bowl Meal
Chuncheon BBQ Chicken,
Gamjatang Pork Bone Soup

Flight Schedule

D7 518	KUL to Busan	0155-0850
	Busan to Jeju	TBA
	Jeju to Seoul	TBA
D7 505	Incheon to KUL	1625-2210

BeeFlyz 
Holiday Sdn. Bhd.

OFFICE ADDRESS:

No.37, Block G, Jalan 3/101C,
Cheras Business Centre,
56100 Kuala Lumpur, Malaysia.

Email: sales@beeflyzholiday.com.my

Tel: +603-9133-9690

Departure Date

Adult (twin)

Fare Included: ✓ Taxes ✓ Tipping

1 Kuala Lumpur → Busan (MEAL ON BOARD)

- ◆ Assemble at KLIA 2, depart flight to Busan, 2nd largest city in Korea.

2 Busan → Jeju Island (L,D)

- ◆ **Gwangandaegyo Bridge** it is the longest bi-level bridge over the ocean in Korea.

- ◆ **Gamcheon Culture Village** explore this lovely village which is famous for its colorfully painted roofs and buildings. The residents made it even more vibrant by decorating the area with murals and sculptures.



- ◆ **Biff Square** in Busan, there is a "movie street" that is famous nationwide. The Busan International Film Festival, which started in 1996, played a pivotal role here until the Hall of Films was created in Haeundae in 2011.

- ◆ **Jagalchi Market** also Korea's largest seafood market, Jagalchi Market is a big fish market selling both live and dried fish. This market represents Busan and is famous throughout the country.

- ◆ **Domestic Flight to Jeju (1.0hr)**
Hotel: 5* Utop Ubless Hotel or similar

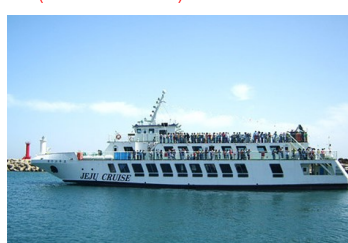
3 Jeju Island (B,L,D)

- ◆ **Seongsan Ilchulbong** rose from under the sea in a volcanic eruption over 100,000 years ago. The crater is about 600m in diameter and 90m high. With the 99 sharp rocks surrounding the crater, it looks like a gigantic crown.



- ◆ **Jeju Folk Village** has restored the scenes of the village to that of the 1890's. It is the island's main tourist attraction where customs of the old days can be explored.

- ◆ **Jeju Cruise** a ride on a Jeju Cruise boat gives opportunities to observe outstanding natural attractions on Jeju Island, enjoy the emerald-blue ocean. (included boat ride)



- ◆ **Play K Pop Museum** newly presents the digital theme park where new media technology and K-pop music meet. Hologram concerts truly give the excitement of actual live concert, also provides "Live 360," a 360 degrees rotating real 3D animation video.



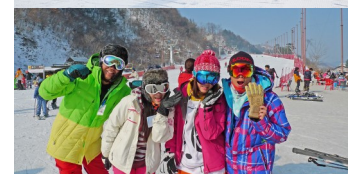
- ◆ **Teddy Bear Museum** showcases coo-worthy teddy bears in a bevy of sizes and guises and will delight both adults and kids alike.

Hotel: 5* Utop Ubless Hotel or similar

4 Jeju Island → Seoul (B,L,D)

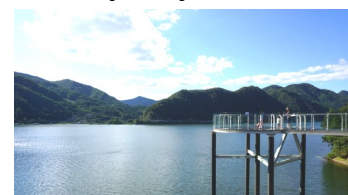
- ◆ **Domestic Flight to Seoul (1.0hr)**
- ◆ **Alpensia Ski Resort** is located in Pyeongchang of Gangwon Province, site of ski jumping venue for 2018 Winter Olympics. Ski resort is 700m above sea level, ideal for human physical activities. Ski from the top in quality snow. What are you waiting for? Join us and experience the top ski runs used in int'l competitions! (equipment rental fee by own)

Hotel: 5* Alpensia Resort or similar



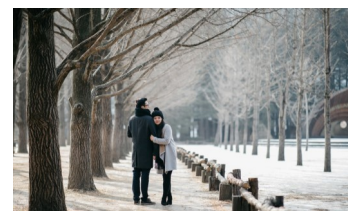
5 Pyeongchang → Seoul (B,L,D)

- ◆ **Uiamho Lake Skywalk** has gained attention as a new tourist attraction in uiamho lake of Chuncheon. Skywalk is a round shaped deck soared about 12 meters in height from the surface of the water. It also has a transparent floor and hand railings, which makes a thrilling experience as you will feel like you are walking on the sky while having the feeling of falling into water!



- ◆ **Nami Island** the scenic trails of chestnut and polar trees, shops and cottage restaurants creating a serenity of happiness and joy. (included boat ride)

Hotel: 5* Shilla Stay Hotel or similar



6 Seoul (B,D)

- ◆ **Seaweed DIY + Hanbook Wearing**

- ◆ **Everland** South Korea's largest theme park, divided to 5 zones: Gobar Fair, Zoo-Topia, European Adventure, Magic Land & American Adventure. Safari bus ride shows ligers and bears roaming in a contained habitat.



- ◆ **Dongdaemun Market** has every fashion item imaginable: accessories, clothes, fabric, and wedding goods.

Hotel: 5* Shilla Stay Hotel or similar

7 Seoul (B,L,D)

- ◆ **N Seoul Tower + Love Lock** a communication & observation tower located on Namsan Mountain in central Seoul. Love Lock, thousand of padlocks attached to the fence by romantic Seoulites symbolizing their undying affection.

- ◆ **National Ginseng Shop, Cosmetic Shop, Healthy Liver Centre**

- ◆ **Myeongdong** the trend setting center of Korean fashion.



- ◆ **Lotte Duty Free** is a one-stop shopping complex providing over 30 boutiques that offer shoppers a wide range of products.

- ◆ **Fireman Show** an impressive display of acrobatics & dance. The show uses a mixture of performance styles to express the demands of being a fireman.

Hotel: 5* Shilla Stay Hotel or similar



8 Seoul → Kuala Lumpur (B)

- ◆ Transfer to airport for flight home.

Hotels based on local star rating category. The sequence of itinerary, such as sightseeing, meals and hotels arrangement may be varies on the actual tour.